

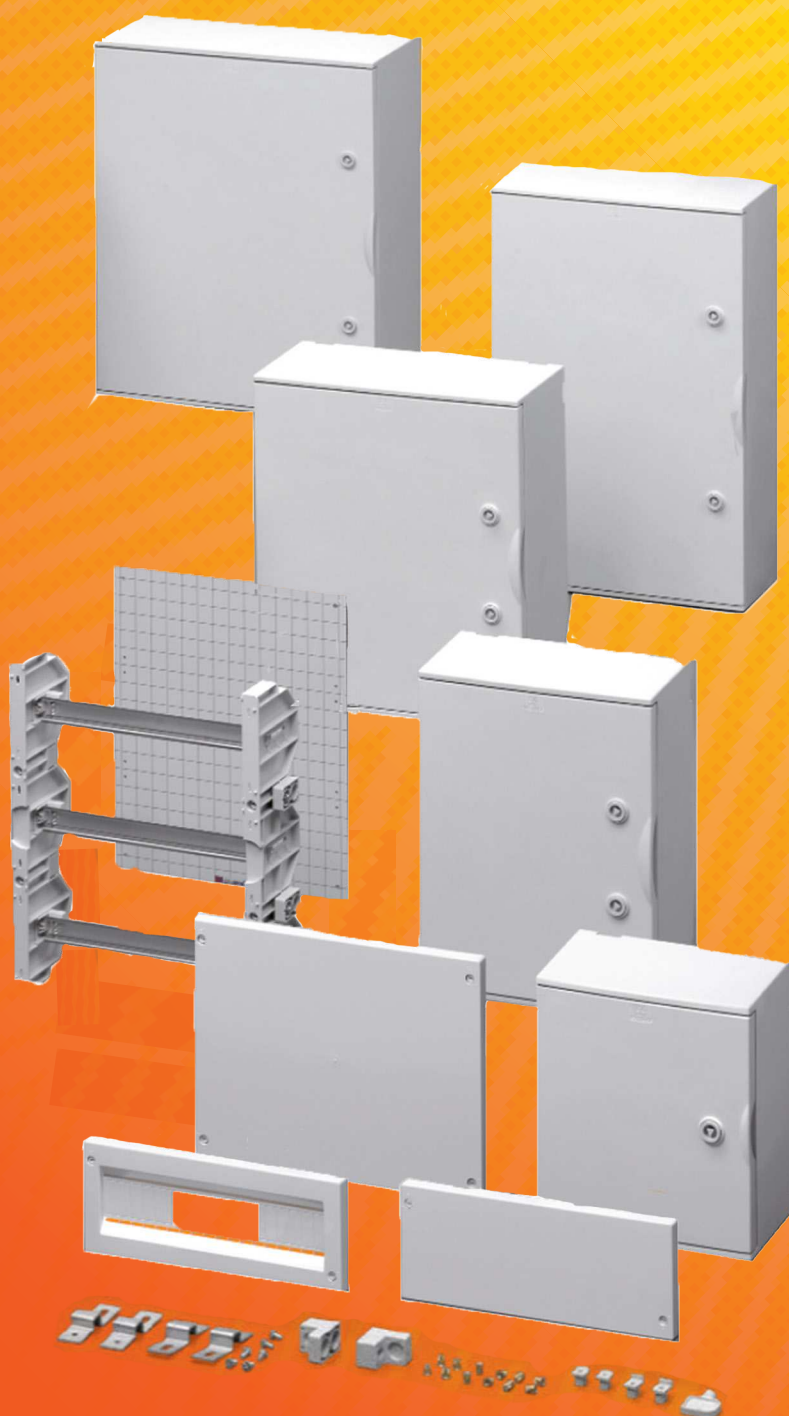


Smarter, fully modular and
customisable Enclosures



Install with confidence

Our GRP Enclosures are an **Italian-made** solar innovation, exclusively sourced and distributed by **PV Connections**



Glass-fibre Reinforced Polyester (GRP) Enclosures

We search the world to bring our customers the very best solar products available. The Italian-made GRP Enclosures are just that.

Excellent quality and specifically engineered to make solar installations safer and faster, these Enclosures are the latest innovation brought to you by PV Connections.

The modular design system means both parts of the enclosure can be configured to suit your specific installation requirements.

GRP Enclosures are made from monobloc polyester and reinforced with 25% fibre glass. The thermoset polyester panels are UV resistant, halogen free and self extinguishing (H-B) to UL94 standard. They are also heat resistant (Glow Wire Test according to IEC 60695-2-11 standard). The blank door is resistant to abnormal heat up to 960°C, and the board with the transparent window up to 650°C.

Highly resistant to corrosion and air pollution and with a nominal application voltage of 1000VAC and 1500VDC, these Enclosures are ideal for installation in outdoor or industrial environments such as photovoltaic, energy and telecommunications plants. Their high-impact resistance to IK10 grade ensures they have the necessary strength to last in these outdoor and industrial applications.

Their IP65 protection rating combined with the double insulation system guarantees the protection of the installed equipment. The boards have an installation temperature between -25°C and +70°C, and the temperature resistance of the material ranges from -40°C to + 110°C.



Highly temperature resistant GRP enclosures



Made in Italy to the highest Australian standards



UV and high-impact resistance to IK10 grade



Highly insulating IP65 protection

Product features

SMARTER, SAFER FEATURES - ACROSS THE BOARD

Made in Italy and engineered specifically for the solar industry, GRP Enclosures boast an exceptional range of high-quality features. Every part of this innovative system has been carefully considered to offer the ultimate flexibility and uncompromising safety.



All enclosures are fitted with reversible doors that can be opened at an angle of more than 180° to avoid creating an obstacle. They are also easy to separate from the bases for easier maintenance.



Enclosure bases are all one piece to reduce weather damage and make installation easier.



Enclosures are made with universal triangular insert locks and supplied keys. Replacement kits and coded safety keys are available where required.



6 sizes are available. The smallest measures 270 x 305 x 170mm and the largest measures 620 x 810 x 320mm.



One-Screw-System: only one type of screw is used for the different accessories for easy assembly.



Two or more boards with the same height can be combined using the joining kit and connecting devices.



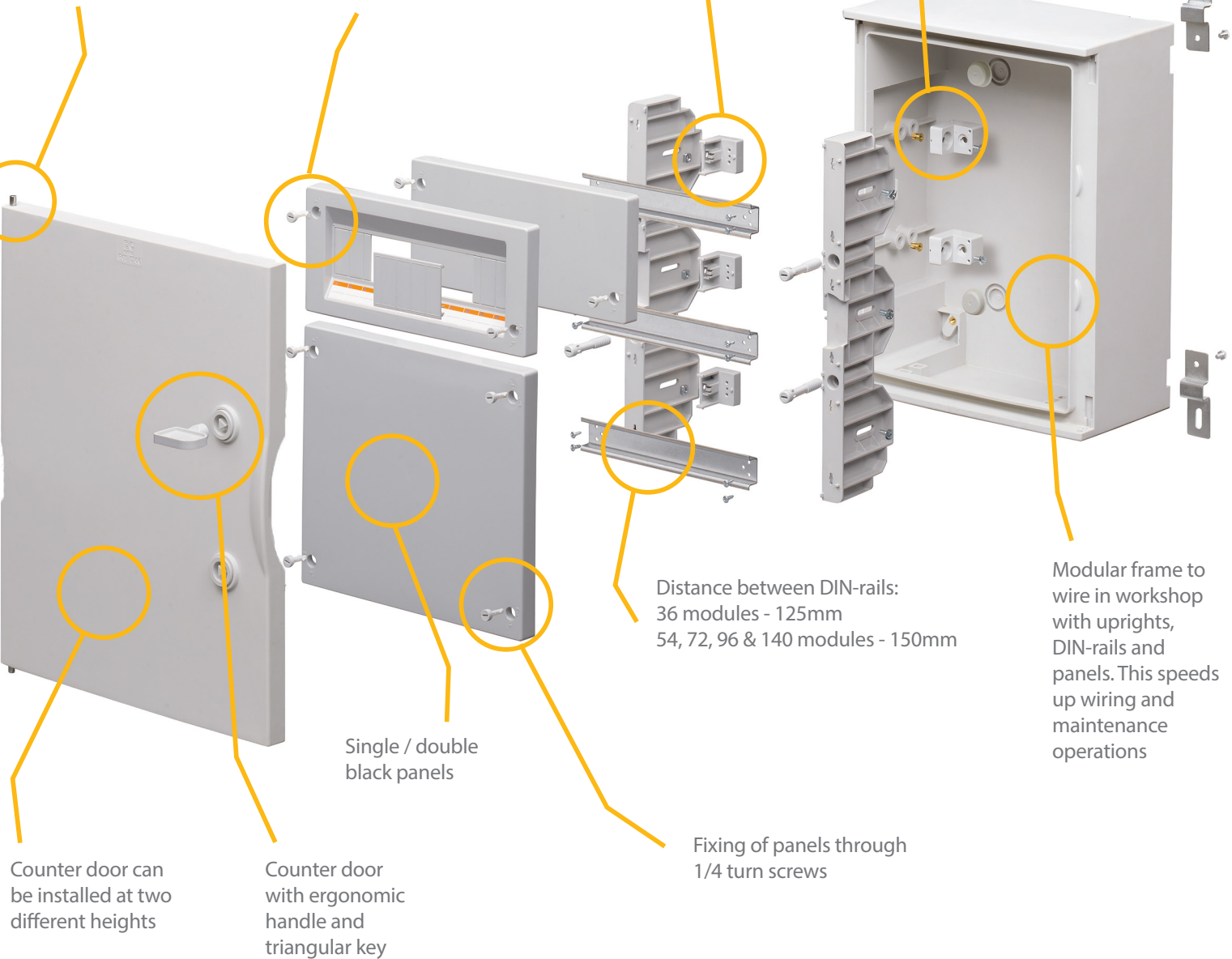
BLANK DOOR ENCLOSURES

Door and counter doors are hinged with rapid fixing through stainless steel spring pins

Modular blank plate

DIN-rail adjustable at three heights: 48, 75 & 102mm

Accessory fixing through brass expansion inserts



Installation features

WALL FIXTURES



Bases are fixed to walls with supplied galvanised or stainless steel brackets, and bolted to the wall with approved screws to maintain IP-protection and double insulation.



The brackets can be placed horizontally or vertically according to your needs. Threaded rods are available for mounting on various supports, e.g. poles supports.

DOORS AND BACK PLATES



Rapid fixing counter doors have stainless steel spring pins and ergonomic handles as well as a standard locking system with triangular keys.



Doors may be hinged to be either left or right opening and can be changed by releasing the stainless steel spring pins.



Doors have a greater than 180° opening angle so they remain against the wall and do not create dangerous obstructions.



Backing plates may be placed at different heights using the proper adjusting kit.

Installation features

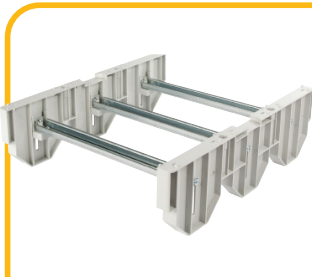
DIN RAILS



Supplied DIN rails are 15mm high, and can be fitted at the following distances apart:
36 modules – 125mm
54, 72, 96 & 140 modules – 150mm.



Mount DIN rails and supports on uprights to the desired height and fix with supplied screws.



The modular frame can be set with the number of guides required and positioned at different heights. This can be wired in the workshop and later installed into the board.



25 – 40mm high slotted trunkings can be installed behind the frame to make wiring easier.



The frame is supported by the base allowing the installer to perform wiring and maintenance with both hands free.



The final fixing of the complete frame is made with insulating screws for maximum speed of installation and maintenance.

PANELS



Single / double blank panels can be fixed in position with ¼ turn insulating screws.



Installing the frame in the highest position ensures the IP20 protection degree even with the door opened.

ENCLOSURE COMPONENTS

GRP Enclosures are completely modular so you can customise a smarter solution to suit your exact needs and your specific environment.



Dimensions mm WxHxD Modules distance	Polyester board with blank door	Insulating back plate (direct fixing on bottom)	Pair of uprights	DIN rail with supports	Module cover with window	Blank module cover
PACKAGING	1 piece	1 piece	1 pair	1 piece	1 piece	1 piece
270x305x170	EC625001	EC625041	—	—	—	—
325x430x185 36M (3x12) 125mm	EC625002	EC625042	EC625072	EC625132 12 modules	EC625102 12 modules	EC625112
435x505x215 54M (3x18) 150mm	EC625003	EC625043	EC625073	EC625133 18 modules	EC625103 18 modules	EC625113
435x655x215 72M (4x18) 150mm	EC625004	EC625044	EC625074	EC625134 18 modules	EC625104 18 modules	EC625114
545x655x265 96M (4x25) 150mm	EC625005	EC625045	EC625075	EC625135 24 modules	EC625105 24 modules	EC625115
620x810x320 140M (5x28) 150mm	EC625006	EC625046	EC625076	EC625136 28 modules	EC625106 28 modules	EC625116

ENCLOSURE COMPONENTS



Double blank module cover



Set of 4 galvanised steel brackets



Set of 4 stainless steel brackets



Safety lock with 2 keys



Joint kit

1 piece	1 kit	1 kit	1 kit	1 kit
—	EC625SZ	EC625SI	EC625SC	EC625GI
EC625122	EC625SZ	EC625SI	EC625SC	EC625GI
EC625123	EC625SZ	EC625SI	EC625SC	EC625GI
EC625124	EC625SZ	EC625SI	EC625SC	EC625GI
EC625125	EC625SZ	EC625SI	EC625SC	EC625GI
EC625126	EC625SZ	EC625SI	EC625SC	EC625GI

SPARE DOORS & ACCESSORIES



Dimensions
mm
WxHxD
Modules
distance

Blank
spare door

Triangular spare key

PACKAGING	1 piece	10 pieces
270x305x170	EC625001R	EC625ST
325x430x185 36M (3x12) 125mm	EC625002R	EC6250ST
435x505x215 54M (3x18) 150mm	EC625003R	EC6250ST
435x655x215 72M (4x18) 150mm	EC625004R	EC6250ST
545x655x265 96M (4x25) 150mm	EC625005R	EC6250ST
620x810x320 140M (5x28) 150mm	EC625006R	EC6250ST



For safer, faster
and smarter solar
installations, insist
on the experts.

p 1300 818 419 f 1300 885 122
16 Kalman Drive, Boronia Vic 3155



pvconnections.com.au